

Lastcell ACB



500 kg till 5 ton

CARL LIDÉN

VÅGSERVICE

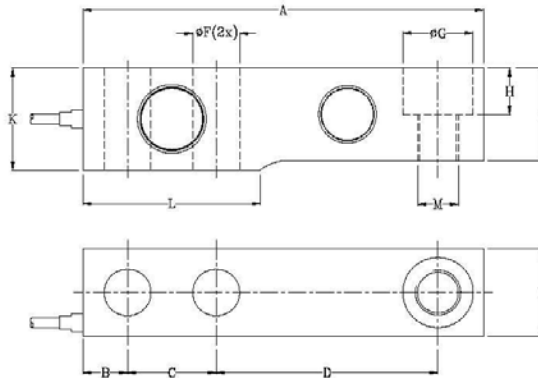
ACB: SPECIFICATIONS

Capacity	E _{max}	kg	500 ^{1,2} , 1000, 2000, 5000				
			C3	C4	C5	C6	
Accuracy Class According to OIML R60 ²			3000	4000	5000	6000	
Maximum Number of Verification Intervals	n _{ic}		E _{max} /6000	E _{max} /8000	E _{max} /10000	E _{max} /12000	
Minimum Verification Interval (V _{min} = E _{max} /N)	V _{min}		E _{max} /15000	E _{max} /20000	E _{max} /20000	E _{max} /20000	
Minimum Verification Interval, Type MR ³	V _{min}		C3	C4	C5	C6	
Accuracy Class According to Type Designation ¹		CC					
Combined Error		%S	≤ ± 0.050	≤ ± 0.023	≤ ± 0.018	≤ ± 0.014	≤ ± 0.012
Hysteresis		%S	≤ ± 0.050	≤ ± 0.017	≤ ± 0.013	≤ ± 0.010	≤ ± 0.008
Non-Repeatability	E _R	%S	≤ ± 0.070	≤ ± 0.035	≤ ± 0.026	≤ ± 0.021	≤ ± 0.018
Creep Error (30 Minutes)		%S	≤ ± 0.060	≤ ± 0.025	≤ ± 0.018	≤ ± 0.015	≤ ± 0.012
Creep Error (20-30 Minutes)		%S	≤ ± 0.0200	≤ ± 0.0053	≤ ± 0.0039	≤ ± 0.0032	≤ ± 0.0026
Minimum Dead Load Output Return	MDLOR	%S	≤ ± 0.050	≤ ± 0.017	≤ ± 0.013	≤ ± 0.010	≤ ± 0.008
Minimum Dead Load Output Return, Type MI6	MDLOR	%S _{nom}		≤ ± 0.008	≤ ± 0.008	≤ ± 0.008	
Temp. Effect on Min. Dead Load Output	TC _s	%S _{nom} /5°C	≤ ± 0.0250	≤ ± 0.0117	≤ ± 0.0088	≤ ± 0.0070	≤ ± 0.0058
Temp. Effect on Min. Dead Load Output, Type MR ³	TC _s	%S _{nom} /5°C		≤ ± 0.0047	≤ ± 0.0035	≤ ± 0.0035	≤ ± 0.0035
Temperature Effect on Sensitivity	TC _s	%S/5°C	≤ ± 0.0250	≤ ± 0.0088	≤ ± 0.0065	≤ ± 0.0053	≤ ± 0.0045
Minimum Deadload	E _{min}	%E _{max}			0		
Safe Load Limit	E _{lim}	%E _{max}			150		
Ultimate Load	E _{ult}	%E _{max}			300		
Maximum Safe Sideload		%E _{max}			100		
Deflection at E _{max}		mm		0.13, 0.21, 0.29, 0.38			
Excitation Voltage		V		5 ... 12			
Maximum Excitation Voltage		V		15			
Rated Output	S _{nom}	mV/V		2 ± 0.02			
Current Calibration	SC-version			Standard			
Zero Balance		%S _{nom}		≤ ± 1.0			
Input Resistance	R _{in}	Ω		1000 ± 50			
Output Resistance	R _{out}	Ω		1000 ± 10			
Insulation Resistance	R _{ins}	MΩ		≥ 5000			
Compensated Temperature Range	T _{cp}	°C		-10 ... +40			
Operating Temperature Range	T _{op}	°C		-40 ... +80			
Storage Temperature Range	T _{stg}	°C		-40 ... +90			
Element Material				Stainless steel 1.4542			
Sealing (DIN 40.050 / EN 60.529)				IP66 and IP68			
Recommended Torque on Fixation Bolts		Nm		150			
ATEX options for Potentially Explosive Atmospheres			IIIG EEx ia IIC T4/T6 or IIID T70°C, II3G EEx nA II T6, IM1 Eex ia I, II3D T70°C				

- The specified accuracies apply for the compensated temperature range.
- Capacities 1, 2 and 5t are OIML R60 C6 approved; 500kg C3 approved
- For version 500kg-C3MR: V_{min} = E_{max}/20000 and TC_s = ± 0.0035

SC-version: The rated output and the output resistance are balanced in such a way, that the output current is calibrated to within 0.05% of a reference value. This allows easy parallel connection of the load cells.

Correct mounting of the load cells is essential to ensure optimum performance. Further information is available on request.



Cable specifications:

Length 3m for capacities up to 1t.
Length 6m for 2t and 5t.
6-Wire cable standard.

Excitation + Green
Excitation - Black
Output + White
Output - Red
Sense + Yellow
Sense - Blue
Shield Transparent

Shield is not connected to the load cell body.

E _{max} (kg)	Dimensions in mm			
	500	1000	2000	5000
A	130.0	130.0	130.0	172.0
B	15.5	15.5	15.5	19.1
C	25.4	25.4	25.4	38.1
D	76.2	76.2	76.2	95.3
E	31.8	31.8	31.8	38.0
F	13.0	13.0	13.0	20.5
G	20.5	20.5	20.5	30.2
H	14.2	14.2	14.2	20.0
J	26.0	27.95	31.95	40.0
K	31.8	31.8	35.8	44.0
L	57.1	57.1	57.1	76.2
M	M12	M12	M12	M20

All dimension tolerances according to ISO2768m, unless otherwise specified.

All specifications subject to change without notice
3/4/50/01 E

Carl Lidén Vågservice
Huskvarnavägen 40
554 54 Jönköping

Tel: 036-12 57 80
Fax: 036-12 57 89

sales@carlliden.com
http://www.carlliden.com