

Lastcell SCC



10 till 100 ton

CARL LIDÉN

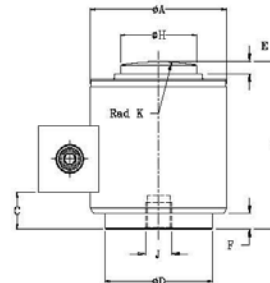
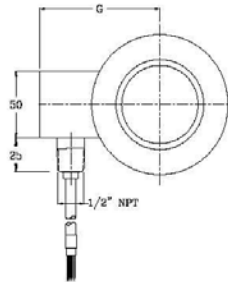
VÅGSERVICE

SCC: SPECIFICATIONS

Standard Capacities (=E _{max})	t	10, 25, 40, 60, 100 ¹			
		CC	C2	C3	C4
Accuracy Class According to OIML R-60			2000	3000	4000
Max. Number of Verification Intervals (n _v)			E _{max} /10000	E _{max} /10000	E _{max} /10000
Minimum Verification Interval (v _{min})				E _{max} /20000	E _{max} /20000
Minimum Verification Interval Type MR					
Combined Error	%S	≤± 0.0500	≤± 0.0230	≤± 0.0200	≤± 0.0173
Non-Repeatability	%S	≤± 0.0200	≤± 0.0100	≤± 0.0100	≤± 0.0090
Minimum Dead Load Output Return ¹	%S	≤± 0.0500	≤± 0.0250	≤± 0.0167	≤± 0.0125
Creep Error (30 Minutes)	%S	≤± 0.0600	≤± 0.0245	≤± 0.0245	≤± 0.0184
Creep Error (20-30 Minutes) ¹	%S	≤± 0.0200	≤± 0.0053	≤± 0.0053	≤± 0.0039
Temp. Effect on Min. Dead Load Output	%S/5°C	≤± 0.0250	≤± 0.0070	≤± 0.0070	≤± 0.0070
Temp. Effect on Min. Dead Load Output MR	%S/5°C			≤± 0.0035	≤± 0.0035
Temp. Effect on Sensitivity	%S/5°C	≤± 0.0250	≤± 0.006	≤± 0.0050	≤± 0.0040
Minimum Deadload	%E _{max}		0		
Maximum Safe Overload	%E _{max}		150		
Ultimate Overload	%E _{max}		400		
Maximum Safe Sideload	%E _{max}		10		
Deflection at E _{max}	mm		0.36 max.		
Excitation Voltage	Vdc		12.5...18.0		
Recommended Excitation Voltage	Vdc		15		
Maximum Current Consumption	mA		80		
Start-up Current	mA		150		
Rated Output	counts		240,000		
Tolerance on Rated Output	counts		≤± 200		
Zero Balance	counts		≤± 200		
Insulation Resistance	MΩ		≥ 5000		
Element Material (DIN)			Stainless Steel 1.4542		
Sealing (DIN40.050 / EN60.529 / IEC 529)			IP66/68		
Signal Update per Second			25		
Baudrate	bits/s		9600		
Transmission type			Asynchronous serial transmission		
Start Bits			1		
Data Bits			7		
Stop Bits			1		
Parity			Odd		
Maximum Transmission Cable Length	m		1200		
Data Transmission Interface			RS485 / RS422		
Compensated Temperature Range	°C		-10 → +40		
Operating Temperature Range	°C		-40 → +80		
Storage Temperature Range	°C		-40 → +90		

¹ Applies for the temperature range -10 to +40 °C
2 C1 and C2 class only

Accuracy classes C2, C3 and C4 are in agreement with OIML recommendation R-60. Accuracy C1 is also available. Correct mounting of the load cells is essential to ensure optimum performance. Further information is available on request.



Cable specifications:

Cable length : 20m (10m for 10t version).

Excitation +	Green
Excitation -	Black
Rx +	Yellow
R-	Blue
Tx +	Red
Tx -	White
Shield	Clear

Cable screen is connected to load cell body through a capacitor.

All specifications subject to change without notice

Capacity	10,25	40,60	100
A	73.0	105.0	152.4
B	82.5	127.0	184.2
C	7.0	29.0	67.5
D	58.0	82.5	123.8
E	6.5	8.0	23.6
F	1.8	11.0	21.8
G	79.5	99.0	124.8
H	31.8	58.7	79.2
J	M12x1.75 (11 Deep)	M20x2.5 (20 Deep)	
K Rad	152.0	162.0	432.0

Attention:

Dimensions: mm.
All dimension tolerances according to ISO 2768m, unless otherwise specified.

Carl Lidén Vågservice
Huskvarnavägen 40
554 54 Jönköping

Tel: 036-12 57 80
Fax: 036-12 57 89

sales@carlliden.com
http://www.carlliden.com