

# Lastcell HPS



6 till 60 kg

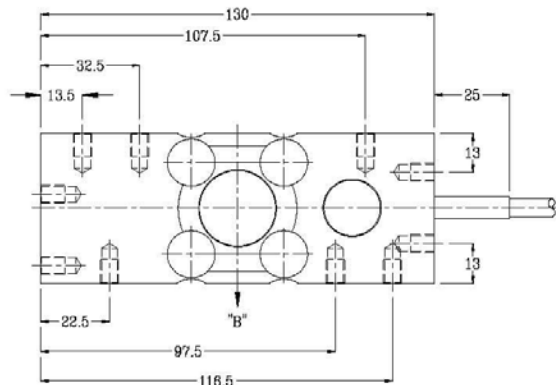
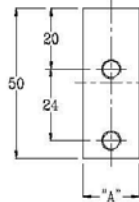
CARL LIDÉN  
  
VÅGSERVICE

# HPS: SPECIFICATIONS

Standard Capacities (=E <sub>max</sub> )	Kg	6, 12, 30, 60			
Accuracy Class According to OIML R-60		CC	C1	C2	C3
Max. Number of Verification Intervals (n <sub>v</sub> )			1000	2000	3000
Minimum Verification Interval (V <sub>min</sub> )			E <sub>max</sub> /5000	E <sub>max</sub> /10000	E <sub>max</sub> /12000
Accuracy According to Type Designation		CC	C1	C2	C3
Combined Error	%S	≤ ± 0.0500	≤ ± 0.0300	≤ ± 0.0230	≤ ± 0.0200
Non-Repeatability	%S	≤ ± 0.0200	≤ ± 0.0200	≤ ± 0.0100	≤ ± 0.0100
Minimum Dead Load Output Return <sup>1</sup>	%S	≤ ± 0.0500	≤ ± 0.0500	≤ ± 0.0250	≤ ± 0.0167
Creep Error (30 Minutes) <sup>1</sup>	%S	≤ ± 0.0600	≤ ± 0.0490	≤ ± 0.0245	≤ ± 0.0245
Creep Error (20-30 Minutes) <sup>1</sup>	%S	≤ ± 0.0200	≤ ± 0.0105	≤ ± 0.0053	≤ ± 0.0053
Temp. Effect on Min. Dead Load Output	%S/5°C	≤ ± 0.0250	≤ ± 0.0140	≤ ± 0.0070	≤ ± 0.0058
Temp. Effect on Sensitivity	%S/5°C	≤ ± 0.0250	≤ ± 0.0080	≤ ± 0.0055	≤ ± 0.0045
Minimum Dead Load	%E <sub>max</sub>	0			
Maximum Safe Over Load	%E <sub>max</sub>	150			
Ultimate Over Load	%E <sub>max</sub>	300			
Maximum Safe Side Load	%E <sub>max</sub>	100			
Deflection at E <sub>max</sub>	mm	0.24±0.02/ 0.19±0.01 / 0.15±0.01 / 0.22±0.03			
Excitation Voltage	V	5...12			
Maximum Excitation Voltage	V	15			
Rated Output (=S)	mV/V	2			
Tolerance on Rated Output	mV/V	± 0.2			
Zero Balance	%S	≤ ± 1.0			
Input Resistance	Ω	400 ± 6	410 ± 6		
Output Resistance	Ω	350 ± 7			
Insulation Resistance	MΩ	> 5000			
Compensated Temperature Range	°C	-10...+40			
Operating Temperature Range	°C	-40...+80			
Storage Temperature Range	°C	-40...+90			
Element Material (DIN)		Stainless Steel 1.4542			
Sealing (DIN 40.050 / EN 60.529)		IP66 and IP68			
Eccentric load effect <sup>2</sup>	%S	0.03			
Recommended Torque on Fixation Bolts	Nm	6			
ATEX options for potentially explosive atmospheres		II2G Eex ib T4/T6, II2D			

1 Applies for the temperature range -10 to +40 °C  
2 Applies at 50% x Rated Load at 150mm radius.

Accuracy classes C1, C2 and C3 are in agreement with the OIML recommendation R-60.  
Correct mounting of the load cells is essential to ensure optimum performance.  
Sufficient protection should be given to the load cell to prevent overload from occurring. Protection during transportation of the equipment to which the load cell is fitted, must be considered.  
Further information is available on request.



#### Cable specifications:

Cable length 7m  
Excitation + Green  
Excitation - Black  
Output + White  
Output - Red  
Sense + Yellow  
Sense - Blue  
Shield Orange

Cable screen is not connected to load cell body.

Capacity	6, 12, 30	60
A	18.5	23.5
B	Central Load Axis	
Max. recommended platform size 350mm		
All Threads M6x1 (8 Deep)		

Attention:  
Dimensions: mm. All dimension tolerances according to ISO 2768m, unless otherwise specified.

All specifications subject to change without notice

1/0/69/03 E

Carl Lidén Vågservice  
Huskvarnavägen 40  
554 54 Jönköping

Tel: 036-12 57 80  
Fax: 036-12 57 89

sales@carlliden.com  
http://www.carlliden.com